

# Overtaking Instruction

Explained in 10 Situations

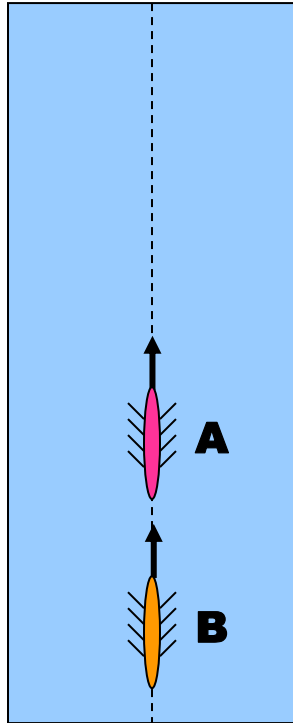
2022



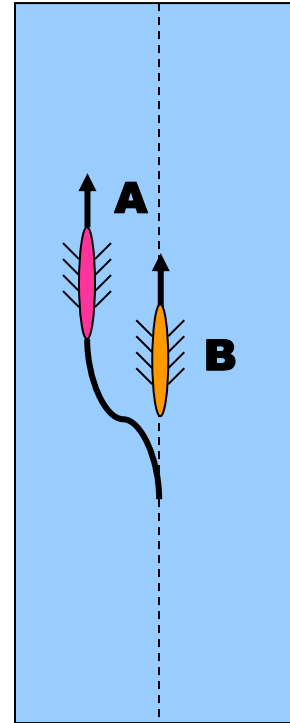
# Reading Guide

- **The ten standard situations how to use the dutch Regulations for Rowing in practise.**

# Situation 1 (no obstacles)



B is gaining on A.  
No obstacles in  
the vicinity.



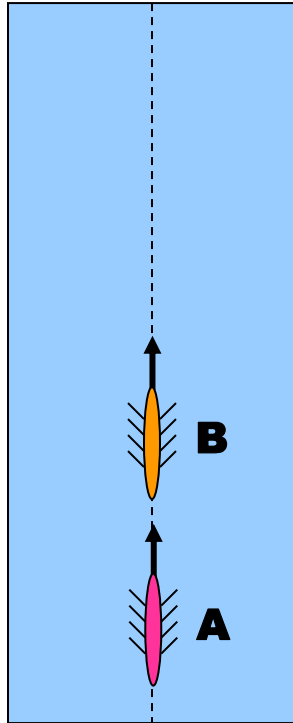
A must yield to B on  
time, so B can travel  
along ideal route  
undisturbed.

A is allowed to  
choose port- or  
starboard.

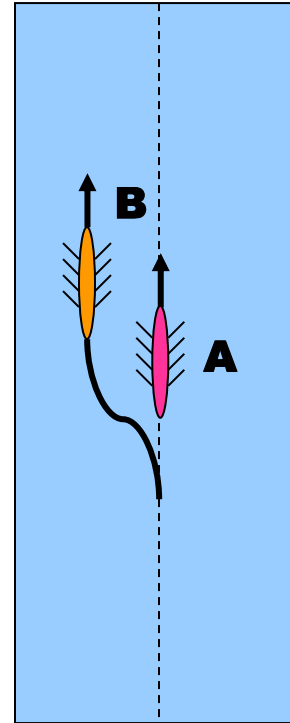
Uneasy water caused  
by A is not considered  
a hindrance for B.

***Dotted line is ideal for B***

# Situation 2 (Come back of crew A)



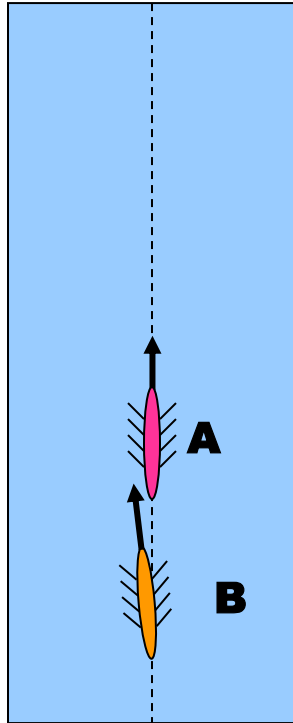
B took over A.  
A is gaining on B.  
No obstacles.



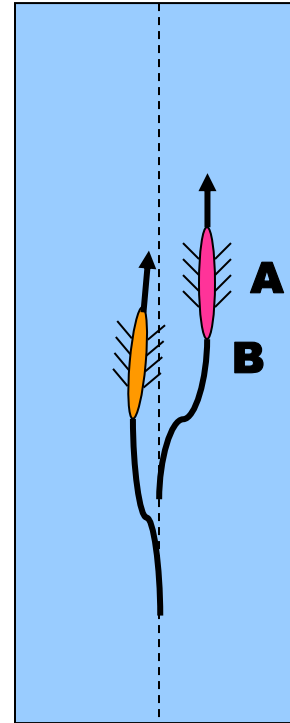
A is the faster  
boat.  
B must yield to A  
on time, so A can  
travel along ideal  
route undisturbed.  
B is allowed to  
choose port- or  
starboard.

***Dotted line is ideal for B***

# Situation 3 (B has a preference)



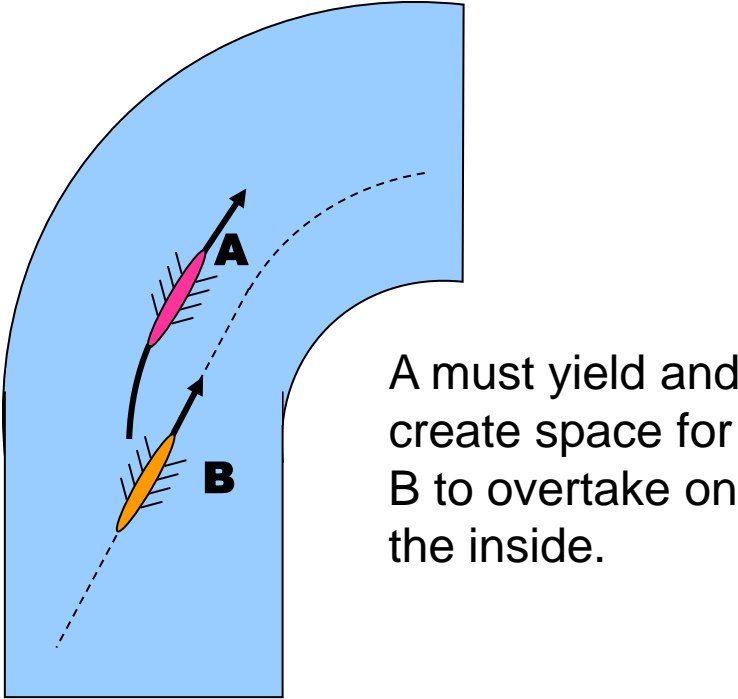
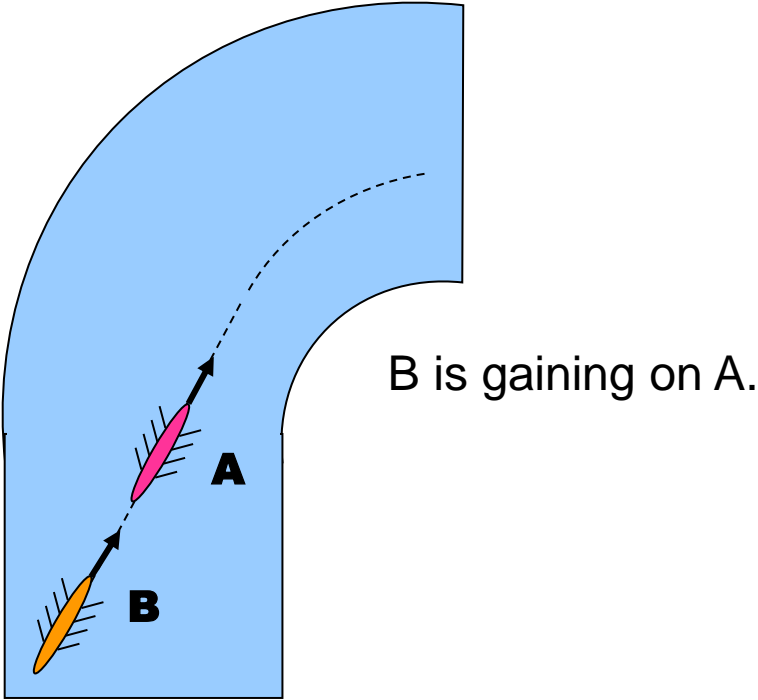
B is gaining on A.  
B prefers to pass on the port side of A  
B is clearly indicating this to A!



A must yield to starboard and must ensure B does not have to prolong its trajectory unnecessary.

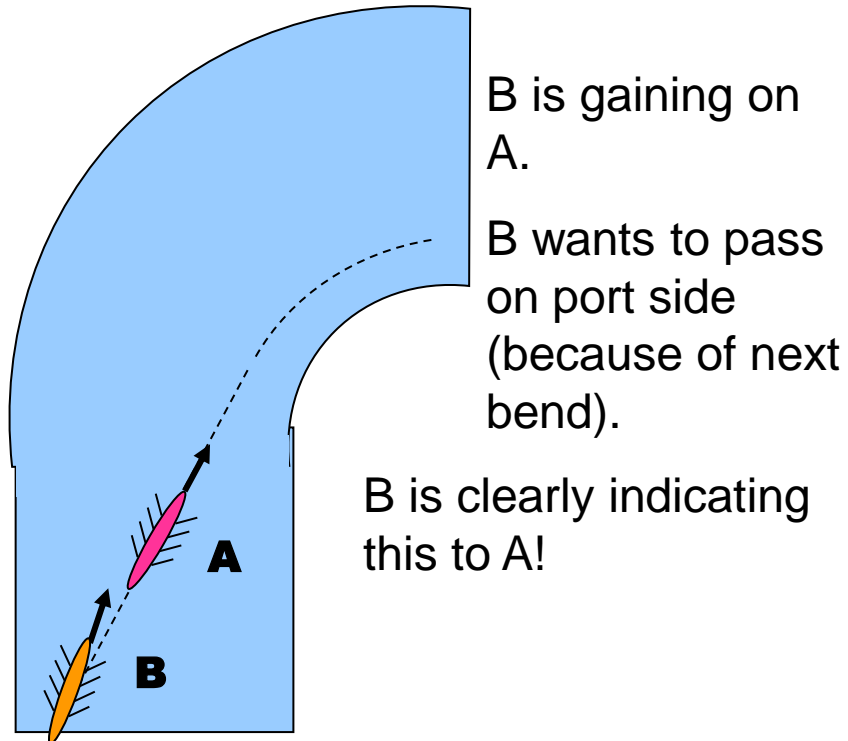
***Dotted line is ideal for B***

# Situation 4 (a bend)

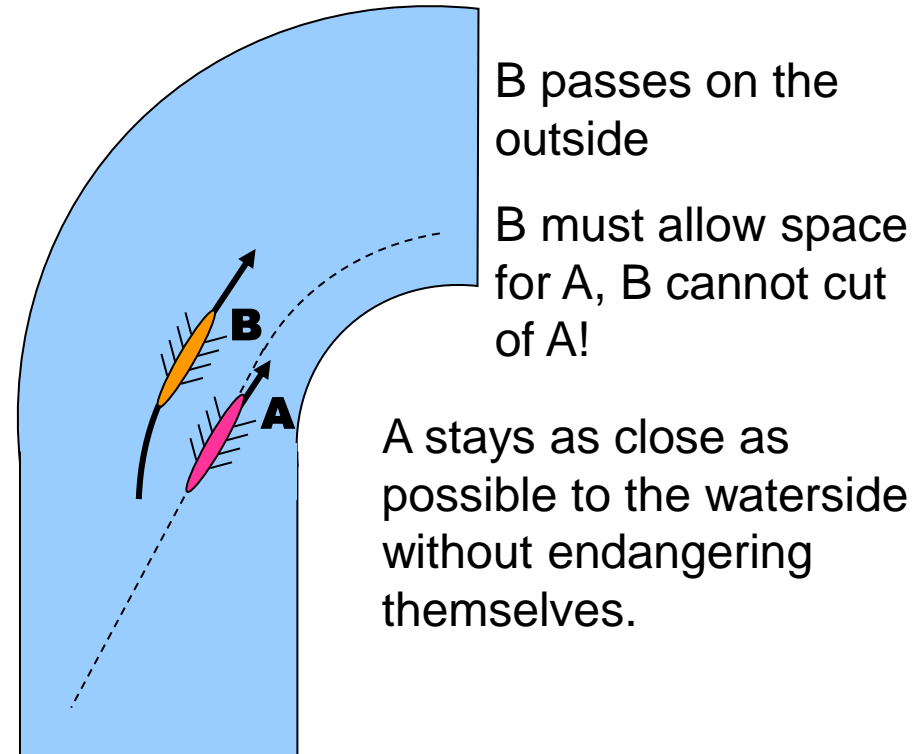


***Dotted line is ideal for B***

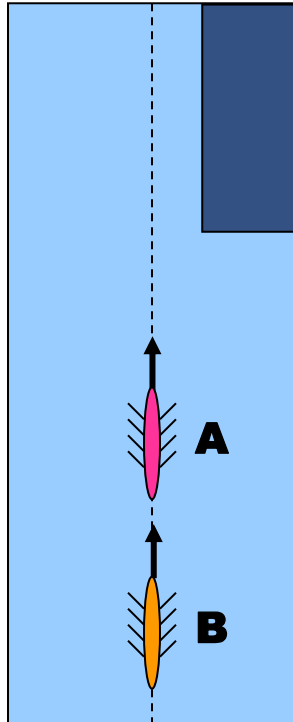
# Situation 5 (a bend, B has a preference)



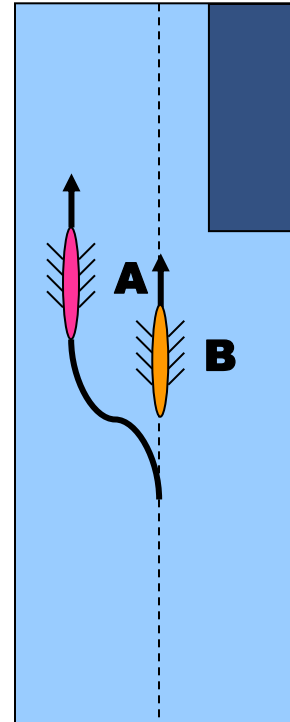
***Dotted line is ideal for B***



# Situation 6 (obstacle)



B is gaining on A.  
An obstacle is coming.



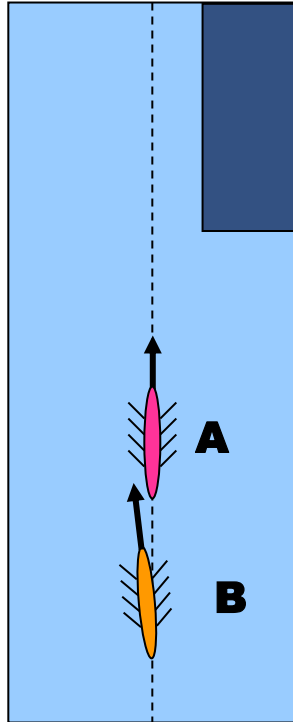
A must yield to B on time, so B can travel along ideal route undisturbed.

A must give way to portside (in this situation).

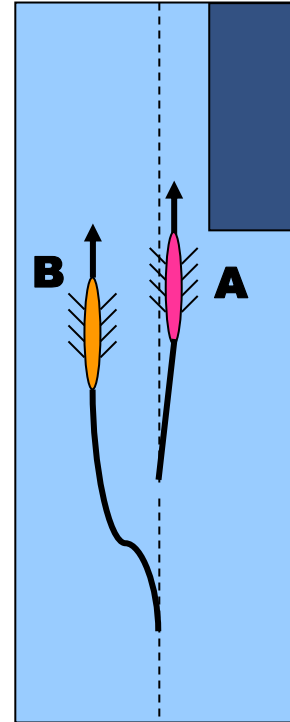
***Dotted line is ideal for B***



# Situation 7 (obstacle, B has a preference)



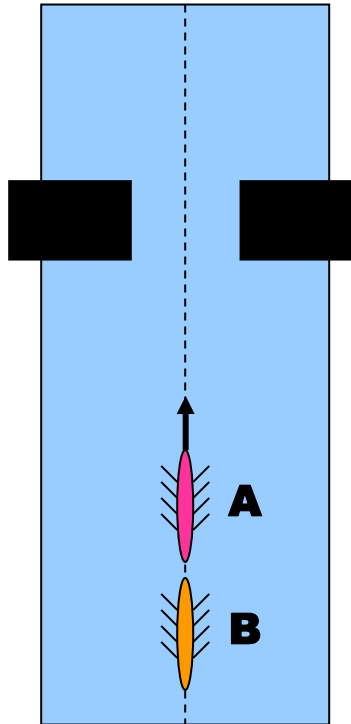
B is gaining on A  
An obstacle is coming.  
B prefers to pass along port side (for instance because of a coming bend)  
B is clearly indicating this!



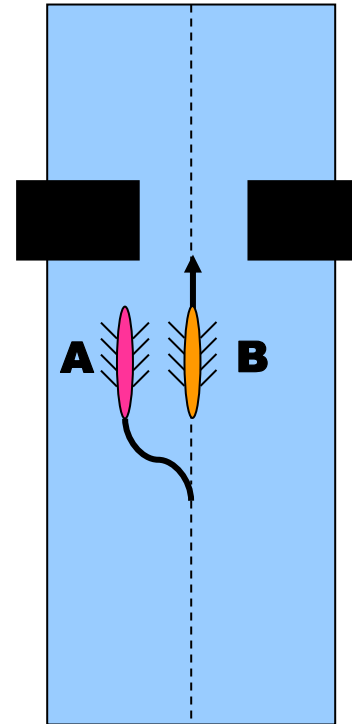
B must yield for A  
B must allow enough space for A (No cutting of A!)  
A stays as close as possible to the obstacle without endangering themselves.

***Dotted line is ideal for B***

# Situation 8 (coming bridge)



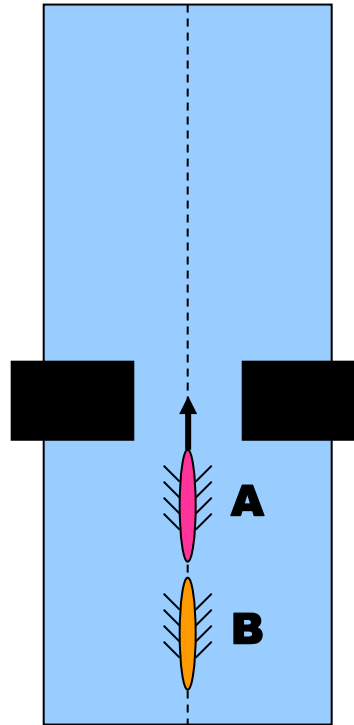
B is gaining on A.  
A bridge is coming.  
The bow of B is past the stern of A and the bridge is still far away.  
A can yield without endangering themselves.



A must yield.  
B can pass the bridge first.  
A must wait or choose a different archway if possible.

***Dotted line is ideal for B***

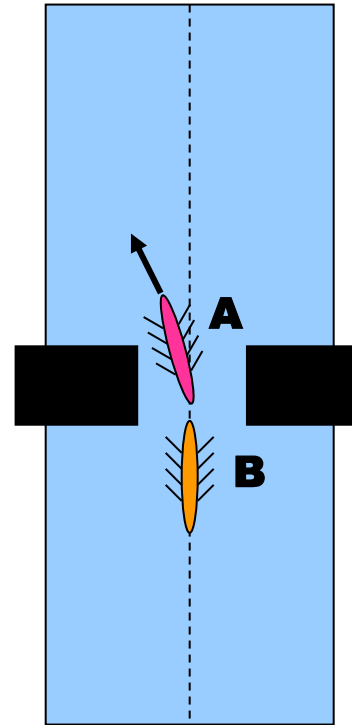
# Situation 9 (A bridge is close)



B is gaining on A.  
A bridge is close.

The bow of B is past the stern of A and the bridge is close.

A cannot yield without endangering themselves.



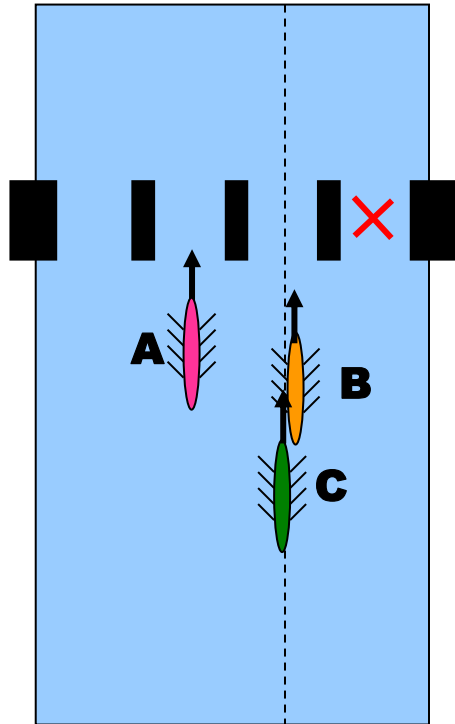
A cannot yield.

A passes the bridge first and immediately makes room for B after the bridge

A can pass under the bridge first or B must choose a different archway if possible.

***Dotted line is ideal for B***

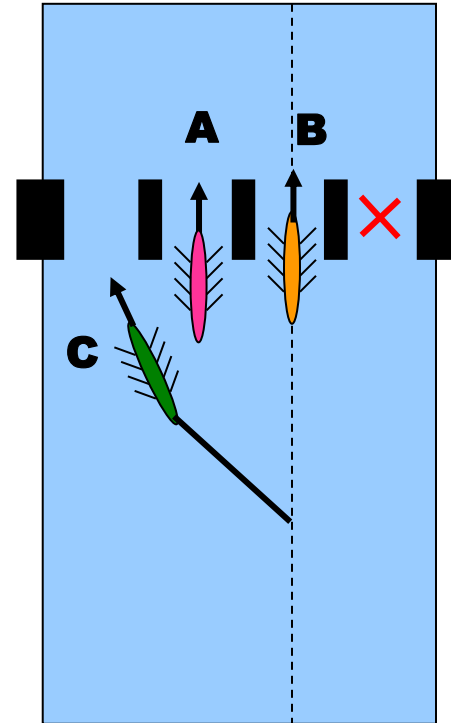
# Situation 10 (several crews; several archways)



B is gaining on A, the bow of C is passing the stern of B.

The bridge has 4 archways, one is restricted.

A and B cannot yield without endangering themselves.



C must choose between the archway furthest away or staying behind A or B.

It is never allowed to take the restricted archway!

***Dotted line is ideal for C***